

THE LONDON RESORT

The London Resort Development Consent Order

BC080001

Environmental Statement Volume 3: Figures

Figure 12.53 Water Vole Receptor – Location

Document reference: 6.3.12.53

Revision: 00

December 2020

Planning Act 2008

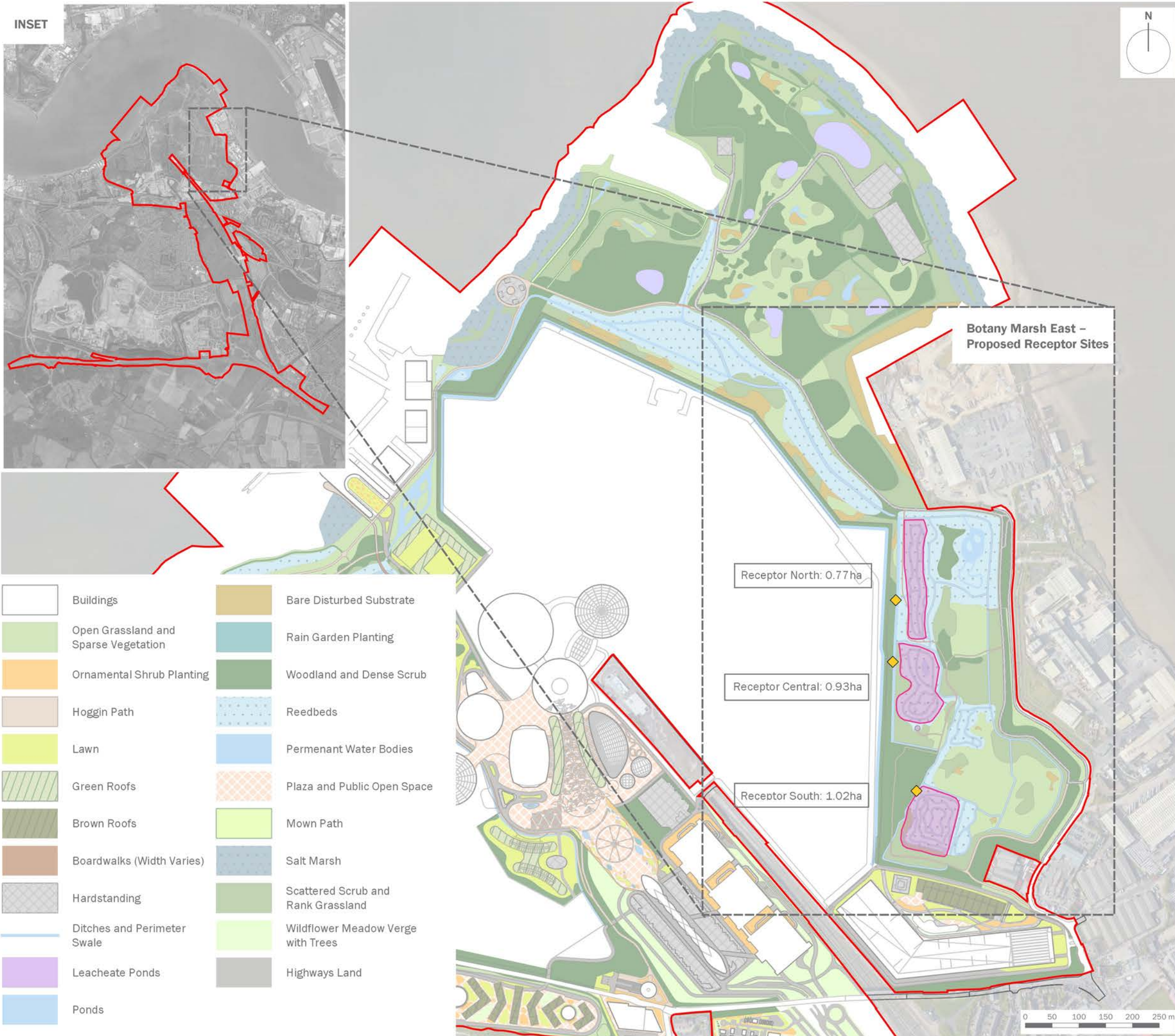
The Infrastructure Planning (Applications: Prescribed Forms and Procedure) Regulations 2009

Regulation 5(2)(a)

The Infrastructure Planning (Environmental Impact Assessment) Regulations 2017

Regulation 12(1)

[This page is intentionally left blank]



- Order Limits
- Water Vole Receptor Areas
- ◆ Culverts

- | | |
|---|---|
| Buildings | Bare Disturbed Substrate |
| Open Grassland and Sparse Vegetation | Rain Garden Planting |
| Ornamental Shrub Planting | Woodland and Dense Scrub |
| Hoggin Path | Reedbeds |
| Lawn | Permanent Water Bodies |
| Green Roofs | Plaza and Public Open Space |
| Brown Roofs | Mown Path |
| Boardwalks (Width Varies) | Salt Marsh |
| Hardstanding | Scattered Scrub and Rank Grassland |
| Ditches and Perimeter Swale | Wildflower Meadow Verge with Trees |
| Leacheate Ponds | Highways Land |
| Ponds | |

client
London Resort Company Holdings Limited

project title
The London Resort

drawing title
Figure 12.53: Water Vole Receptor – Location

date	17 DECEMBER 2020	drawn by	JTF
drawing number	edp5988_d109d	checked	ND
scale	1:7,500 @ A3	QA	GY